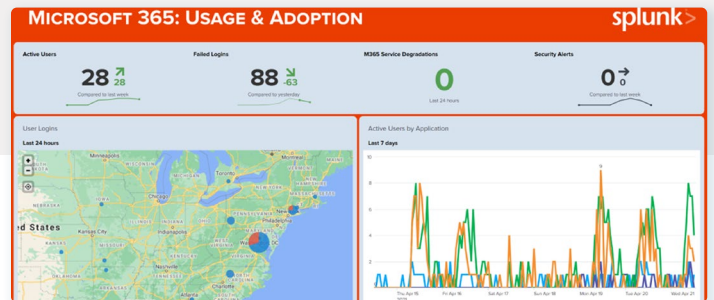
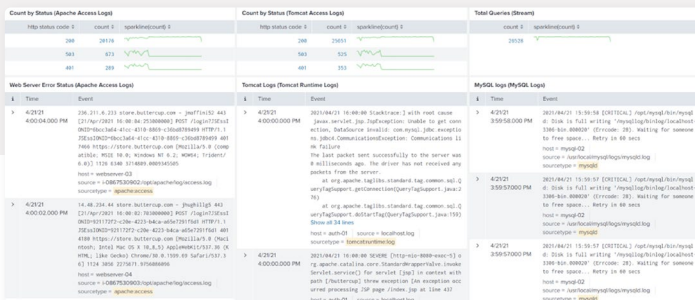


# ValueAccelerator-**INFRA**

**Whitlock ValueAccelerator-**INFRA** is a rapid time-to-value infrastructure monitoring bundle.**

VA-INFRA includes everything necessary to deliver value: best practices, best-of-breed technology, and expert implementation.

Organizations rely on complex applications, diverse infrastructure, and multi-cloud strategies to enhance customer experience and drive business outcomes. With this complexity, measuring reliability and performance becomes more difficult – which is why forward thinking organizations understand that investment in a next generation solution is a must for today’s rapidly changing landscape.



## Solution Highlights



### COMPREHENSIVE CONTENT

Splunk customers enjoy a robust and active user and partner community which leads to a very large and varied content store. This content can be new monitoring, visuals, or complete applications. Most common use cases have content; for anything that’s missing, custom content can be created.



### OBSERVABILITY

OOTB Dashboards provide views for Executive and Operations personas and custom dashboards can be created easily and quickly without programming.

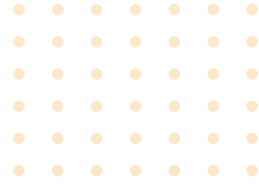


### AGGREGATED EVENT DATA

Ingest data from any source – including systems, devices, and interactions – and turn that data into meaningful business outcomes across your organization.

## ValueAccelerator–INFRA

The Whitlock ValueAccelerator-INFRA lets the experts handle all of the work needed to plan, implement, and support a next generation infrastructure monitoring system. It starts with a proven, project methodology, **WhitlockIS ValueFirst**, to ensure business goals and objectives are clearly defined and realized. Next, Whitlock's expert delivery team will deploy and configure the solution. Finally, **WhitlockIS TotalCare** will provide support and guidance to drive and expand ongoing solution value.



### Four Easy Steps To Get Started

1

Contact [info@whitlockis.com](mailto:info@whitlockis.com) today to get started. It begins with a simple discovery call to understand your needs and provide an overview of relevant solution capabilities.

2

Participate in a **WhitlockIS ValueFirst** workshop to capture organizational goals/objectives, required capabilities, consumers, and expected value to ensure the investment aligns with business goals and outcomes are well understood – in business terms.

3

The WhitlockIS team will design, plan, and deliver the solution to ensure adoption and the expected value realized for three use cases. Example use cases include: Storage Monitoring, Network Management, Server Management, and Application Management.

4

Enjoy the white glove treatment from **WhitlockIS TotalCare** to answer any questions, help out with further configuration, and act as the point of contact for any support issues that may arise.