

Product Overview



WHITLOCK IS

Netreo[®]

Observe. Analyze. Act.

Building the Single Source of Truth

IT has progressed from a cost center to a strategic weapon in modern business. At the same time, it has gotten increasingly complex — and the pace of change is continuing to accelerate. Organizations can no longer make simple decisions to unify their technology and keep it simple to manage. They are required to embrace leading edge technology for each of the requirements put in front of them and they expect that technology to be immediately reliable, available, and scalable.



Observe.

Full-stack visibility into your IT infrastructure, systems, applications, and user experience — in a single customized dashboard.



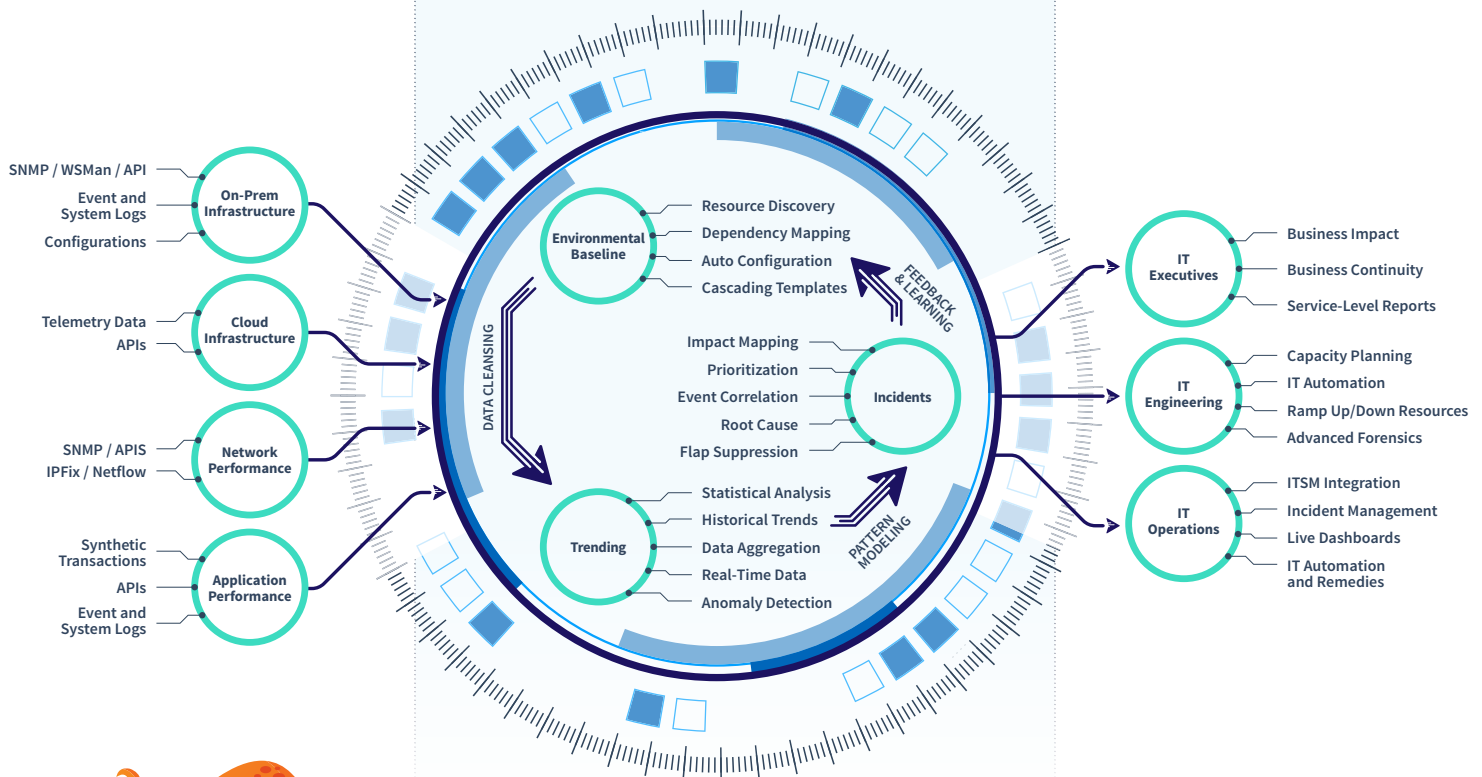
Analyze.

Netreo's AIOps engine delivers simple answers from mountains of data leveraging over 20 years of historical baselines and trends.



Act.

Netreo provides real-time dashboards, dynamic automations, and extensible ITSM integration so you can focus on taking intelligent actions.



Visit netreo.com to learn more

Copyright © Netreo 2020. All Rights Reserved.

Netreo

A Single Source of Truth

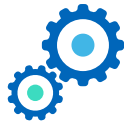
Full-Stack Monitoring and AIOps

Observe and automate everything across the enterprise in a single, unified dashboard — from wherever you happen to be.



Full-Stack Monitoring

Netreo is a full-stack IT management solution that measures the state, operational status, and business impact of all the components in your technology stack. Full-stack monitoring begins at the infrastructure level and includes servers, application performance, system integrations, and digital user experience. Only by adopting a comprehensive visibility approach can you guarantee that your teams will always have the information they need when they need it.



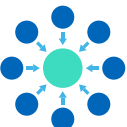
Incident Automation

Your IT Engineers are extraordinarily busy. Netreo can automatically respond to actionable incidents and take corrective action faster than humans can react, or provide 'click to fix' buttons for your operators and engineers to simplify their life. And of course, Netreo can also generate trouble tickets, send notifications via email, SMS, Slack, OpsGenie, Pagerduty, or any of dozens of other notification platforms.



Mobile-Enabled Management

Netreo's mobile app (iOS/Android) allows your teams to manage your environment from anywhere they happen to be, using a patented security architecture that ensures reliable, secure access even from across the country or around the world. Teams now have full access to all of your monitoring data, history, incidents, events, and reports, and can even initiate corrective actions, all from their mobile device.



Zero-Touch Onboarding and Life Cycle Administration

Netreo is designed from the ground-up for scalable, easy administering. New devices can be onboarded and monitored automatically without any operator action, so you never miss a problem due to lack of monitoring. Our automatic discovery and classification systems enable your configuration to stay in-sync with your environment by integrating with your cloud providers, SDWAN, virtualization, and CMDB platforms.



Intelligent Incident Detection and Management

No one can work through a storm of constant alerts. Netreo ensures that your teams only see the alerts they need. Using dynamic topological data and machine learning algorithms, Netreo is able to detect unusual behavior to correlate events. Problems can be prevented before they affect users, root causes are found faster, mission-critical services are more reliable, and SLA attainment becomes the rule rather than the exception.



Deep Insights, Instead of Floods of Raw Data

Filtering through huge lists and logs is a poor way to find issues, and as IT increases in complexity, this problem only gets worse. Netreo makes sure your technical personnel and IT leadership have the data they need to make informed decisions, including predictive analysis, three years of on-board historical data, and instant reporting and dashboard options that don't take special training or scripting knowledge to use.

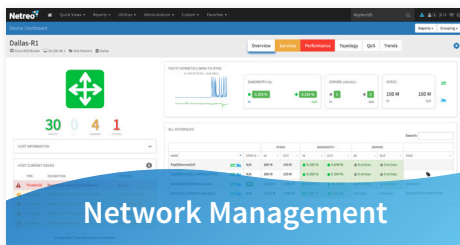
Full-Stack Monitoring

Get Visibility Into Your Entire Stack

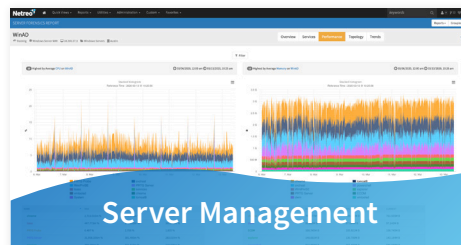
Netreo is a full-stack IT management solution that measures the state, operational status, and business impact of all the components in your technology stack. By monitoring the whole technology stack in one platform, you get comprehensive global views that allow you to quickly identify the true cause of an outage — and avoid having multiple teams wasting time on troubleshooting in parallel.



Netreo Has You Covered



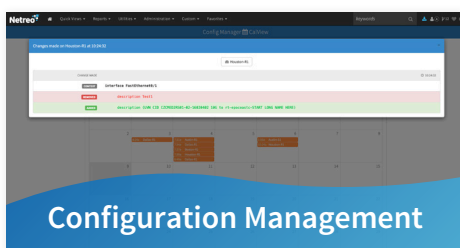
In-depth insight to all your static and dynamic network resources



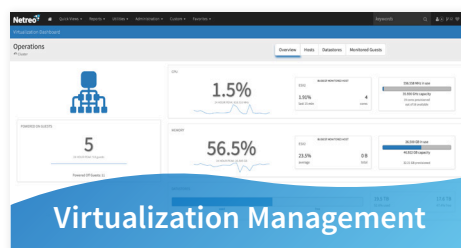
Built-in tools to quickly and easily monitor, report, and alert on server and back-end systems



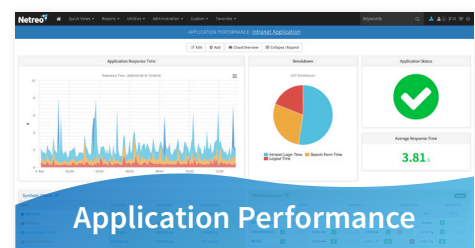
Monitor user experience for mission-critical public or private cloud applications



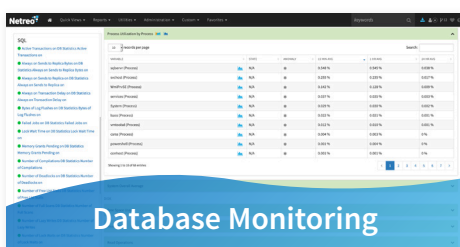
Powerful, easy, and practical network change and configuration management capabilities



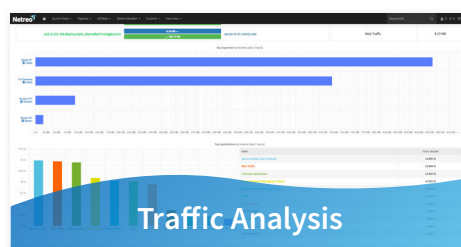
Real-time dashboards, alerts, and historical reporting for your virtual environment



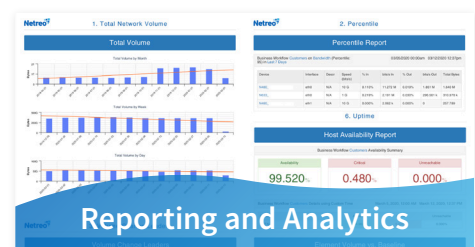
Industry-leading application response monitoring to get a realistic view of user experience



Standards-based or vendor-specific technologies and APIs instead of agents



Collect data from Netflow, sFlow, or IPFIX, Traffic Monitor compatible network devices

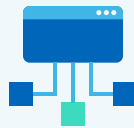


Seamless monitoring of any network-connected device or application in any environment

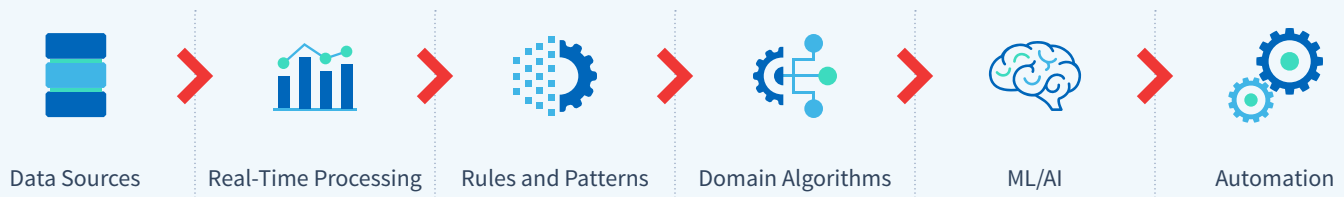
AIOps

Raising the Intelligence in AIOps

AIOps solutions are only as good as the data and context fed into them for model creation. Netreo's AIOps: Autopilot integrates two decades of pragmatic use cases that have made a difference in real-world deployments when deciding how to tune your Netreo application. With Netreo, network and system administrators can spend less time tuning their NMS platforms and spend more time supporting end-users, engineering, and meeting committed service-level agreements (SLAs).



The Technology of Netreo AIOps



Netreo's **AIOps: Autopilot** extends the capabilities of the Netreo full-stack IT management solution, which enables enterprises to easily measure the state, impact and operation of IT resources, so they can focus on their core business. The add-on works with both the on-premises and native-cloud versions of Netreo's solution, including Netreo Cloud.

Always On. Always Analyzing.

Netreo's AIOps: Autopilot runs in the background of a Netreo deployment and constantly scans the configuration to make sure it is always tuned properly. When issues or potential improvements are found, AIOps: Autopilot will either automatically fix the problem or provide engineers suggested remediations using AI and ML algorithms applied against previously gathered historical data.

AIOps: Autopilot automatically learns from every successive execution so that it can both reduce unnecessary alerts and preemptively correct more issues over time.





Action and Automation

Automate Your Urgent Mission-Critical Tasks

Mission-critical tasks can't wait. But when you spend all of your time in fire-fighting mode, you sacrifice efficiency and sustainability just keeping the lights on. This hurts long-term business operations. With Netreo, you can intelligently automate mission-critical tasks like outage reports, root-cause analysis, and mapping to help you keep your eyes off your dashboards and instead on your organization's future.

Automated Mapping

Netreo's automated mapping functionality provides instant visual confirmation of network and device status for any size enterprise, with minimal configuration and maintenance.



Automatically
Generate Dynamic
Geographic Maps



Topology
Mapping Without
Configuration



Customized,
Personalized Map
Data

Active Incident Response

Netreo includes an automation engine to **automatically build responses** to open incidents. These responses can be complex scripted transactions and can both remedy issues and ramp resources up or down depending on need.

Netreo's Active Incident Response helps minimize mean time to repair (MTTR) by addressing issues automatically instead of waiting for the correct teams to be identified, alerted, and engaged for manual diagnosis.

Fully Automated Reporting on Virtually Any Device

Netreo's reporting engine is meant to be self-contained and has full automation capabilities. We provide statistics from virtually any device on your network: Bandwidth. Errors. CPU. Memory. Disc. You name it. We use automated reports to turn performance into usable statistical data or information to assist IT managers, engineers, and anyone else in the business or IT decision-making process.



Netreo  TM