

# Complete Azure Resource Visibility

Netreo Essentials enhances management of Microsoft Azure for IT professionals by providing deep & immediate insight into the performance and availability of their Azure cloud systems and resources. Optimize cloud costs and intelligently automate issue resolution with features like live dashboards, fully customizable and meaningful alerts, immediate notifications, automated scalability and much more.

## Observe

Visibility into all Azure resources from the virtual machine instance level through high level SaaS services means there are no blind spots and business KPIs are constantly monitored.

## Analyze

Take advantage of extended Azure metrics and a year of 1-minute data granularity to help your IT personnel glean valuable insights into your entire Azure deployment.

## Act

Contains a full suite of UI-driven and no-code tools to automate your environment for auto-scaling resources, self-healing actions and recovery procedures, and other tasks.

## What is Netreo Essentials?

An advanced solution for cloud monitoring and automation of virtual machine instances, services, applications, and other resources deployed on the Azure cloud platform.

## Who Benefits?



**IT Leadership** - Netreo Essentials offers IT leaders the opportunity to get deep visibility into their Azure deployments and make sure utilization of its services are realizing their planned cost control benefits.



**IT Engineering** - Drive efficiency among IT engineering teams with Netreo Essentials. No need to bounce between the Azure admin console and other solutions. Essentials offers additional monitoring capabilities, templateable profiles, and 24+ integrations to ITSM and other 3rd party tools.



**IT Operations** - Complete visibility helps your IT Operations team route tickets to the proper engineering team the first time around, which reduces MTTR and increases end-user and customer satisfaction.



*"Netreo Essentials allows us to move extremely fast with confidence. If anything goes wrong, we'll know it before our customers even notice! It's a must-have for any Azure system."*

**JOEL KARR**

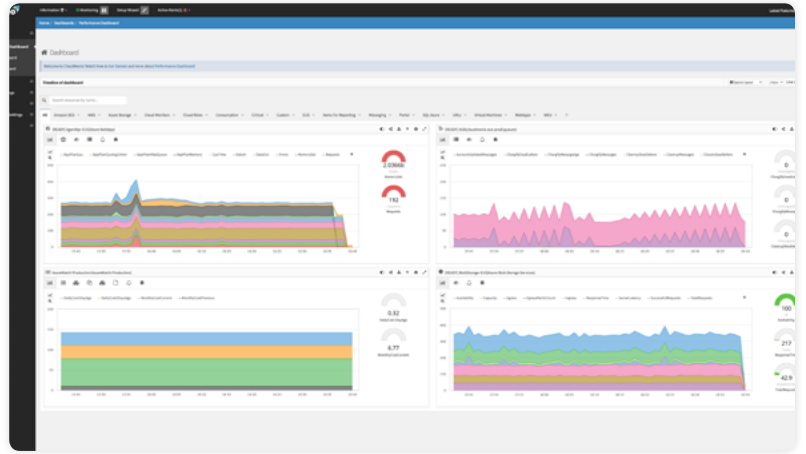
VP of Engineering, Stratus Intelligence

# The Cloud Visibility You Need When You Need It

## Uplevel your Azure Monitoring

Netreo Essentials enhances the Azure tools provided by Microsoft so they're useful to your entire IT organization.

- Generate metric dashboards that provide a year's worth of historical data.
- Configuration templates to make the monitoring process of new resources easier.
- Clear, consistent, and easy-to-predict licensing costs.



Netreo Essentials - Scheduled Reports

Enabled	Name	Generation Time	Data Selection	Recipients
<b>Executive Report</b>				
<input checked="" type="checkbox"/>	Daily Summary Report	Daily, @ -14:00 o'clock	Data Selectors: L, Resources: L, Metrics: 2	Users: 0
<input checked="" type="checkbox"/>	Monthly Summary Report	Monthly, @ -14:00 o'clock, 1st day of the month	Data Selectors: L, Resources: 45, Metrics: 337	Users: All
<input checked="" type="checkbox"/>	Weekly Summary Report	Weekly, @ -14:00 o'clock, on Sunday	Data Selectors: L, Resources: 45, Metrics: 337	Users: All
<b>Capacity Report</b>				
<input checked="" type="checkbox"/>	Weekly Capacity Report - Overutilized Resources	Weekly, @ -7:00 o'clock, on Friday	Data Selectors: L, Resources: 14	Users: 0
<input checked="" type="checkbox"/>	Weekly Capacity Report - Underutilized Resources	Weekly, @ -7:00 o'clock, on Friday	Data Selectors: L, Resources: 14	Users: 0
<input checked="" type="checkbox"/>	Weekly Capacity Report (P90)	Weekly, @ -17:00 o'clock, on Monday	Data Selectors: L, Resources: 2	Users: 0
<b>Alert Summary Report</b>				
Enabled	Name	Generation Time	Data Selection	Recipients

## Alerting and Reporting Capabilities

A constant challenge with regard to IT monitoring is alerting and reporting. Netreo Essentials improves upon Azure in several ways:

- Near real time alerts (< 1 min) to errors and problem conditions with your Azure resources.
- Automated delivery of both executive-focused and IT Engineering-centric reports.
- Create maintenance windows to suppress alerting when planned outages are in progress.

Subscription: Paraleap Technologies

Subscription Plan: Netreo Essentials

Subscription ID: a9a9a9a9-a9a9-1234-5678-a9a9a9a9a9a9

Account: CloudMonix

Account ID: a9a9a9a9-a9a9-1234-5678-a9a9a9a9a9a9

Region: USA-East

Definitions: 46

Users: 13

Monitoring: Running

Name	Data Center	Resource Definitions
AgentTest	USA-East	5
AzureWatch	USA-East	5
CloudMonix (Current)	USA-East	46
CloudMonix Demo Account	USA-East	3
CloudMonix-Dev	USA-East	3
Customers	USA-East	7
Demo Account1	EU-West	47
Swenson Inc	USA-East	0

## Enterprise and MSP Features

Netreo Essentials is the optimal monitoring solution for the entire spectrum of IT organizations. In addition to tools to help small to medium sized IT departments it also includes features specific to managed service providers and enterprises alike.

- Multi-tenant views to separate different accounts within the same subscription.
- White labeling of the user interface and reports to allow service providers to offer their customers a unique portal experience.
- Data retention levels sufficient to allow for long term capacity and metrics trend analysis.

## Netreo Essentials

	Native Azure Monitoring	Netreo
Overview	Azure basic monitoring available via Azure Portal	Netreo extends Azure with: <ul style="list-style-type: none"> <li>- additional monitoring capabilities</li> <li>- self-healing automation and auto-scaling</li> <li>- 5-min setup time with preconfigured metrics and alerts</li> <li>- advanced reporting features</li> <li>- 24+ integrations to ITSM and other 3rd party tools</li> <li>- templatable profiles</li> <li>- ideal for MSP's, CSP's and DevOps</li> <li>- much more!</li> </ul>
<b>Overall</b>		
Historical dashboards	✗	✓
Configuration templates	✗	✓
Fast and easy setup	✗	✓
Maintenance windows	✗	✓
Pricing	based on data consumption volume, near-impossible to predict	based on the number of resources, clear and stable
<b>Dashboards &amp; Insights</b>		
Metrics	Basic	Extended
Data retention	Metrics: 30 days, activity log: 90 days	1 Year
Metric aggregation	✓	✓
Customizations	✓	✓
<b>Alerting</b>		
Reaction time	1-5 min	1 min
Alerts on logs	✓	✓
3rd party integrations	4	24
<b>Automation</b>		
Self-healing automation	basic, via Azure Automation runbooks PowerShell scripts	extended, UI-driven, no programming required
Auto-scaling	basic, programming required	advanced, UI-driven, no programming required
Automated shutdowns	single schedule	multiple schedules, custom configurations
<b>Reporting</b>		
Ad hoc, export to Excel	limited	✓
Automated delivery	✗	✓
Uptime Statistics	✗	✓
Executive Summary	✗	✓
Customizations	✗	✓
<b>DevOps features</b>		
Automated stability	basic, programming required	advanced, UI-driven, no programming required
API-based configuration control	Limited, programming required	✓
<b>MSP features</b>		
Multi-tenant views	✗	✓
White label	✗	✓
ITSM integrations	limited	✓
<b>Enterprise features</b>		
Role-based security	✓	✓
Data retention	metrics: 30 days, activity log: 90 days	1 year
Prod vs. Dev separation	✓	✓